

Country Club Village



21 Sawgrass Circle

\$509,900

CATHERINESWIFT
SALES REPRESENTATIVE

ROYAL LEPAGE Team Realty
Independently Owned and Operated, Brokerage

6081 Hazeldean Road, Unit 12B Ottawa, ON K2S 1B9
T: 613.831.9287 F: 613.831.9290
Toll Free: 1.888.0757.7155
www.catherineswift.ca | swift@royallepage.ca

SWIFT. RELIABLE. SERVICE.



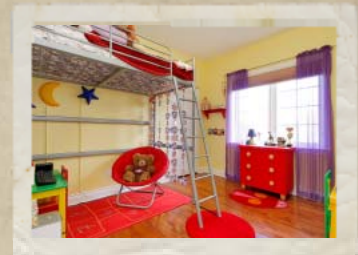


Built in 2000 by Olympia Homes, this three-bedroom, three-bathroom all-brick bungalow is nestled on a private two-acre lot backing on the eighth green of the Canadian Golf and Country Club and features approximately 2,300 square feet of living space.

Step into this bright and airy home and you'll be impressed by the generous, welcoming foyer and immediately struck by the gorgeous central living/dining rooms with striking pillars and vaulted ceiling. This large entertaining area opens on to the rear deck with golf course views. Gleaming hardwood and quality ceramic floors carry throughout the home.



There's a handy 2-piece bathroom close by as well as the home's three well-proportioned bedrooms and full family 4-piece bath room. Enter the private master suite and find two large walk-in closets, a 5 piece ensuite master bath, beautiful views and your own private doorway leading to the deck. The perfect spot to enjoy your morning cappuccino.



In the home's other wing, you'll find the main floor laundry complete with separate laundry tub and overhead storage. The kitchen features ceramic flooring, a centre island, plenty of cabinet and counter space including an eat-up bar for four. The eating area is surrounded by windows and features a vaulted ceiling. The kitchen opens onto the family room with gas fireplace featuring a marble hearth and surround and the room also has access to the rear deck.



The unfinished basement awaits and has high ceilings to accommodate your finishing touches.



- | | |
|--|--|
| Year Built: 2000 | Exterior: Brick |
| Garage: 3 Car Attached
Garage, Inside Entry | Basement: Unfinished |
| Taxes: \$4,730 in 2009 | Lot Size: 2 Acres; Imp: 301' x 290' |
| Inclusions: Dishwasher, Refrigerator, Stove, Hood Fan | |
| Exclusions: Washer & dryer | |
| Schools: A. Lome Cassidy ES, Goulbourn MS, Katimavik ES, Munster ES, Richmond PS, South Carleton SS, Holy Spirit School, Sacred Heart ES, Sacred Heart HS, Venta Preparatory School | |
| Rented: Propane Tank | |